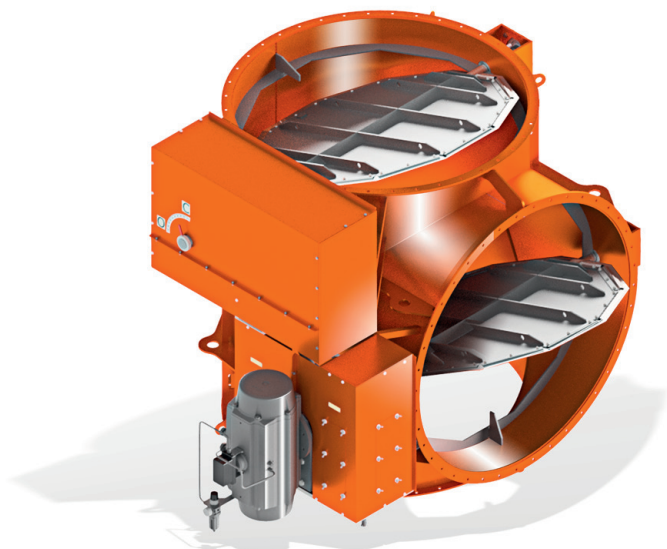


“each of our damper is tailor made for the customer”

Applications



1. Body
2. Moving elements covers
3. Position indicator
4. Padlock device
5. Nameplate ID
6. Bolting and fasteners
7. Bearing
8. Push stuffing box
9. Gland packing
10. Bearing support
11. Limit bar (sealing line)
12. Connection lever
13. Shaft connection
14. Main shaft
15. Disc A
16. Disc B
17. Free-end shaft
18. Sealing line
19. Pull rod with joints
20. Actuator support



Technical description

Diverters type **AFT-DVR** are designed to divert the flow of high temperature exhaust gases, emitted by gas turbines or stationary engines, to a waste heat exchanger or alternatively through a chimney to the ambient atmosphere.

Diverters are in fact big size 3-way valves, which have connections identical with their adjacent inlet and outlet ducts. Sophisticated design and precise assembly, enabling compensation of thermal deformations, are the most important features of our diverters. Applied materials are resistant to high temperatures. Efficient thermal insulation prevents from heat losses and also protects the structure against high temperature influence.

Product properties:

range of dimension and diameter (WxH) / (Ø):
 200 x 200 mm – 2 000 x 2 000 mm
 200 mm – 2000 mm
 (other sizes on request)

Connection to duct:

- by flanges acc. to DIN 24154, DIN 24193
- by flanges acc. to PN6, PN10, PN16 (wg EN1092-1)
- custom-made acc. to customer requirements (ANSI / GOST / OTHER)
- welding-ends
- rounded flanges for fiber compensator connection

Design and working parameters:

- design pressure < 0,5 bar
- design temperature -30°C to +750°C (max up to 1100°C)
- other temperatures on request, possibility to use isolation, concrete or ceramic lining, etc.

Actuator connection:

- according to ISO 5211
- custom-made acc. to customer requirements
- adapted to work with customer actuators or on site actuators

Coating:

- Carbon steel elements:
RAL 2008 as standard with epoxy primer
- Stainless steel elements:
acid treatment and passivation
- other on request, all painting systems acc. to EN ISO 12944 – systems C2 up to C5 – industrial/marine

Applicable directives:

- Declaration of Conformity in compliance with Machinery Directive
- Directive CE
- Declaration of Conformity in compliance with EU Directive
- ATEX Directive (all groups and zones)

Tightness class:

- possible class I, II and III according to FCI 70-2 (ex ANSI B16.104)
- possible geometrical tightness from 95% up to 100% (see datasheet Materials & Sealings)
- possible 100% tightness with sealing air systems (see datasheet AFT-DVR-T)

Extras:

- for diverters for gas distributor installations (gas turbines, etc.) with sealing air systems and thermal lining inside (see datasheet for Tandem Diverters AFT-DVR-T)
- depending on the transportation possibilities, diverters are built in one piece or in parts to be mounted together on their allocated site

