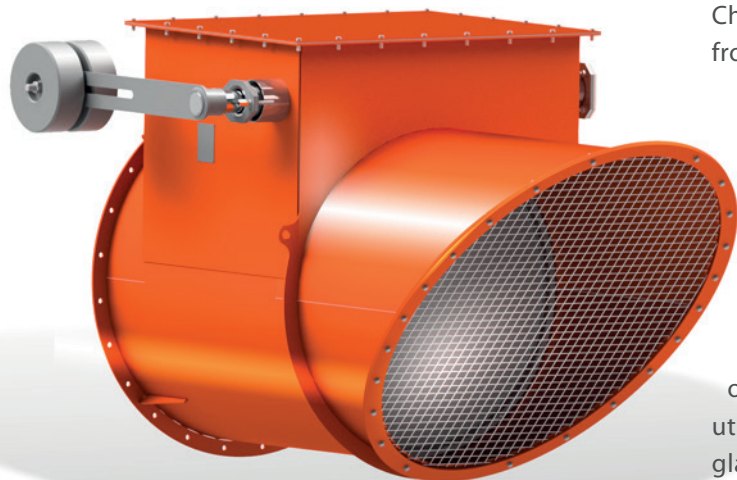


“each of our damper is tailor made for the customer”

### Applications



- 1 Drive shaft
- 2 Disc
- 3 Counterweight
- 4 Stuffing box pusher
- 5 Slide bearing
- 6 Gland packing
- 7 Stuffing box
- 8 Body
- 9 Limit bar (sealing line)
- 10 Outlet metal mesh
- 11 Inspection cover
- 12 Fasteners
- 13 Cover sealing
- 14 Sealing end-plate
- 15 End-plate



## Technical description

Check Valves type **AFT-CV** protect the installations from medium backflow. The valve operation is based on the pressure difference on both sides (upstream/downstream). The disc opens automatically when the pressure at upstream side reaches the expected settled value. The counterweight mounted on the blade shaft is used to adjust the range of opening point.

Such valves find application in flue gas extraction installations, flue gas desulphurization, gas utilization SO<sub>2</sub>, SO<sub>3</sub>, NO<sub>x</sub>, dedusting of furnaces, glass factories, metallurgical plants for copper, zinc, plumb as well as cement factories and others. Safety/Check Valves also work with fluid media as protection against backflow or as pipe-end equipment.

### Product properties:

- range of diameters: Ø 50 mm – Ø 1 600 mm  
other sizes on request
- possibility of execution wafer type dampers with very narrow face-to-face dimension and/or with spring systems for disc  
(see datasheet ECOS – ECOSTop)

### Connection to duct:

- drilling acc. to DIN 24154
- drilling acc. to PN6, PN10, PN16 (acc EN1092-1)
- assembling with flanges, wall mounting or with welding ends
- custom-made acc. to customer requirements (ANSI / GOST / OTHER)

### Design and working parameters:

- design pressure < 0,5 bar
- design pressure < 3,0 bar (with PED Directive)
- design temperature -30°C do +750°C  
(max up to 1100°C)

### Actuator connection:

- according to ISO 5211
- custom-made acc. to customer requirements
- adapted to work with customer actuators or on site actuators

### Coating:

- Carbon steel elements:  
RAL 2008 as standard with epoxy primer
- Stainless steel elements:  
acid treatment and passivation
- other on request, all painting systems acc. to EN ISO 12944, systems C2 up to C5 - industrial/marine

### Applicable directives:

- Declaration of Conformity in compliance with Machinery Directive
- CE Directive
- Declaration of Conformity in compliance with EU Directive
- ATEX Directive (all groups and zones)
- PED Directive

### Tightness class:

- possible class I, II and III acc. to FCI 70-2 (ex ANSI B16.104)
- possible geometrical tightness from 95% up to 100% (see datasheet Materials & Sealings)

