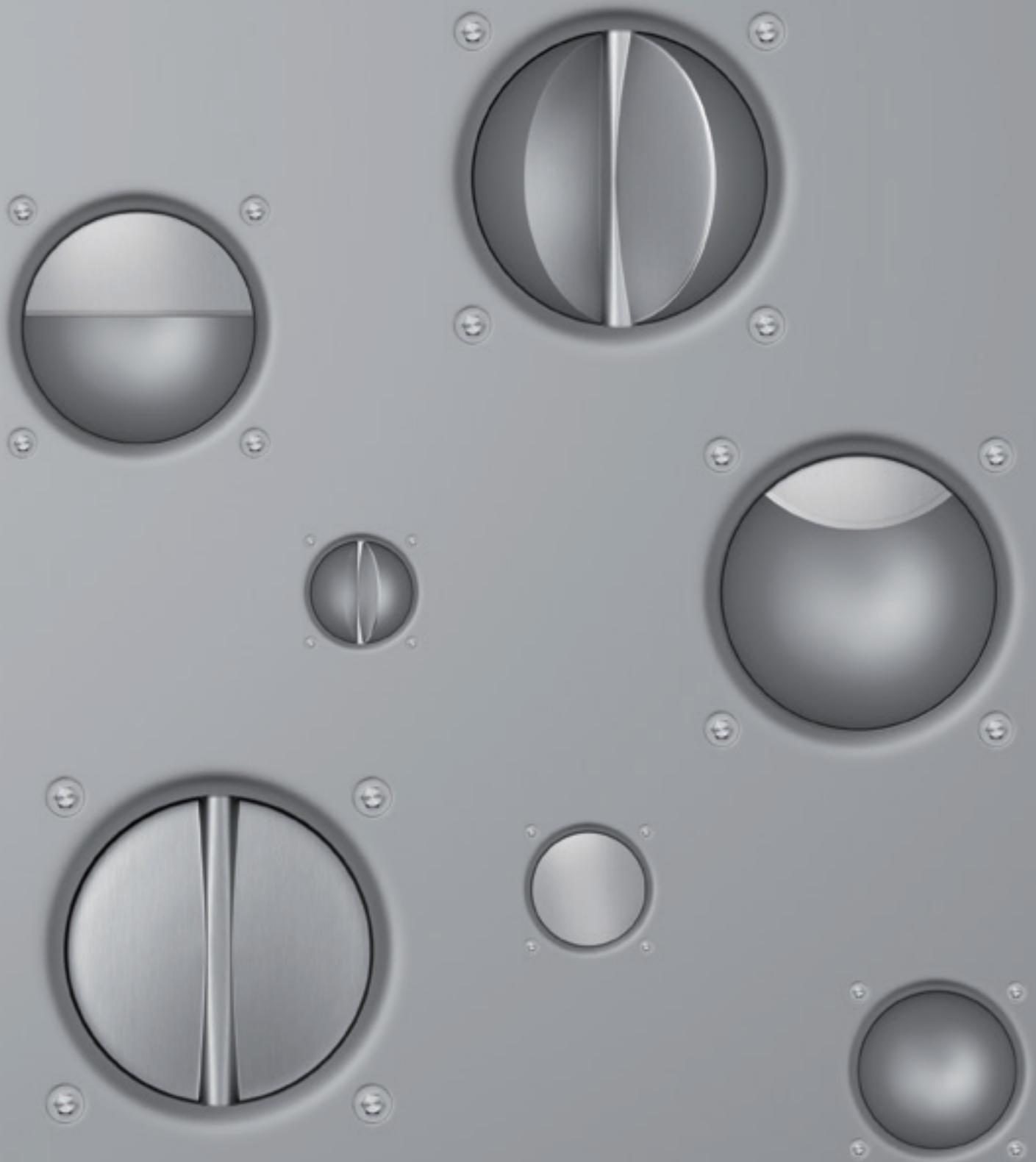


The Product Range.

1.1.11



**That's
theWey.**

wey®

VALVE INNOVATION_MANAGEMENT



SWISS
PERFORMANCE

**That's
theWey.**

Worldwide in service, worldwide reliable

Wey Knife Gate Valves – worldwide first choice

Wey Knife Gate Valves are worldwide in service since decades. Their reliability is so outstanding as its competitiveness. The valves stand for bi-directional zero-leakage shut-off, qualify for most kind of fluids of various consistencies and have taken a leading international position due to their wide range of applications. Wey Knife Gate Valves have proven records in wastewater treatment plants, in pulp and paper, food and beverage, chemical and petrochemical industries, silo works and bulk material handling, mining and energy plants, in oil sand extraction and dust explosion prevention.

Wey Water Control Gates – leading for decades

The right solution for all needs: The Wey Water Control Gate range is so broadly conceived and flexible, that it can be adapted for all situations. Thanks to technical finesse, quality and diversity in service, our products have become the first choice in water and wastewater treatment, for collecting and retention basins, as well as for channel and pit construction. Also in focus the range of products for flood prevention and for water management. Self-energized designs are friendly to the environment and most economical.

Wey Butterfly Valves – built to last

Regardless whether in public water supply or in industry: Wey Butterfly and Check Valves, also when faced with difficult working conditions, perform best and with low maintenance. The design and choice of materials are based on longtime technical and field experience. With the wide and modular product range specific customer requests can be fulfilled.

Wey Knife Gate Valves – worldwide first choice

Reliable and indestructible

- Safe. 100% process capability thanks to bi-directional zero-leakage shut-off on pressure and vacuum.
- Reliable. Failure-free operation due to self-flushing, full-bore passage. Designed for perfect flow pattern with optimized gate edge geometry.
- Cost cutting. Low operating costs due to service optimized sealing, which can be repacked without removing the valve from the piping system.
- Customized. Solutions for most difficult applications.
- Conform. Plant safety by complying to the pressure equipment directive.

Program



VN



MF



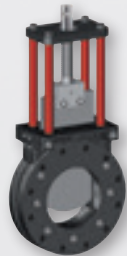
MG



MH



AO



A3



VK



DP



HD



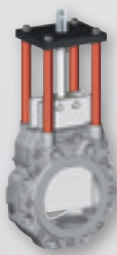
HSI



VS



VL



DB



VM

Actuator



Manual



Lever



Manual/Gear



Electric



Pneumatic



Oil hydraulic



Manual emergency



Chain wheel

Technical details

■ Size

DN 50 – DN 1600, larger size on request

■ Seal

NBR, EPDM, FPM, PUR, AFLAS, PTFE, Ceramic

■ Flange drilling

EN 1092, ASME B16.5/B16.47 class 150/300

■ Material

Cast iron EN-GJL-250, Ductile iron EN-GJS-400-15, Cast steel, Stainless steel 1.4408, Duplex 1.4470, Titanium, Hastelloy, Aluminium, others

■ Pressure rating/Vacuum

10 bar, 16 bar, 25 bar, 40 bar, 100 bar / to 10 mbar absolute

■ Temperature

Minus 50 to 230°C at max. operating pressure
240 to 400°C at atmospheric pressure

■ Application

Wastewater

Municipal wastewater, Industrial wastewater, Sludge treatment, Shipbuilding

Industry and process technology

Chemical industry, Steelworks, Biomass, Food and Beverage, Oil/Gas, Pulp and paper, Drilling mud

Energy

Desulphurisation, Water treatment, Cooling water, Ash handling

Mining

Solid extraction, Sludge transport, Gravel treatment, Oil-sand transport

Water

Water treatment, Water transport, Water intake from lake or river

Building service

Effluent, Process water, Potable water, HVAC industry

Others

Wey Water Control Gates – leading since decades

Rugged and smooth actuation

- Double tight. Higher performance than conventional designs due to double lip seal arrangement and double scrapers for bi-directional leak-tightness.
- Clean. Perfect flow regulating function and clean environment with a four sided seal system and a guided gate for the full stroke.
- Comfortable. Minimum operating force due to specific material selection with good gliding properties.
- Modular. Easy realisation of particular hydraulic flow design specifications thanks to modular construction.
- Corrosion resistant. Constructions comply to the C6-directive.

Program



Sluice Gate 3



Sluice Gate 4



Weir Gate
3.5 and 4.5



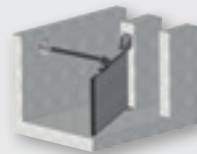
Sluice Gate 4.6



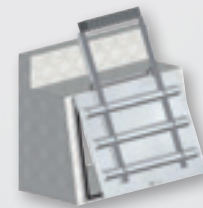
Hand Stoplog 5.0



Telescopic Valve 6.2



Diverter Gate 6.3



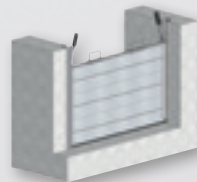
Flap Valve 6.4



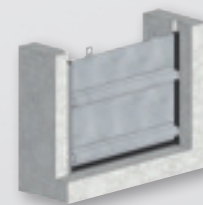
Flap Valve 6.4.1



Radial Weir Gate 6.5



Stoplog (Alu) 6.6



Stoplog (SS) 6.7

Actuator



Square Drive



Manual



Manual/Gear



Electric



Pneumatic



Oil hydraulic

Technical details

■ Size/Pressure range

Width up to 4 m, water column up to 10 m, larger size and dimension on request

■ Construction

3-side sealing, 4-side sealing

■ Installation

Embedded, 2-sides anchored, 3-sides anchored, Channel mounting

■ Material

Stainless steel 1.4404 and others

■ Profile shapes

Straight and slant/circular bottom profile, profiled with channel profile, others

■ Application

Wastewater

Municipal wastewater, Industrial wastewater, Water treatment plants, Surface water, Road wastewater, Extinguishing water

Industry

Retention basin, Collecting basin

Potable water

Water treatment

Wey Butterfly & Check Valves and Trading Products – built to last

Powerfull and capable

- First class. Dynamical sealing system, low torque, absolutely tight.
- Steady. Vulcanized rubber body lining warrants for life.
- Well-priced. Designs with exchangeable body lining.
- High-performance. Metallic seated designs for highest demands.
- Complete. Wafer, lug-type, double flanged body with centric, eccentric or double eccentric disc arrangement: Quality from a single source.

Program



TZ01



EVS



EVFS



BV10



BV12



Dynaxe



BV56



RSK



TK01



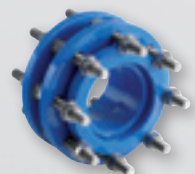
ECV



BV38



BV39



7000

Actuator



Manual/Worm Gear



Manual/Cross head gear



Lever



Electric



Pneumatic



Extension spindle

Technical details

■ Size

DN 32 – DN 1000, larger size on request

■ Flange drilling

EN 1092

■ Material

Cast iron, Ductile iron, Stainless steel 1.4408 and others, Elastomer and Teflon lined

■ Pressure rating/Vacuum

10 bar, 16 bar, 25 bar, 40 bar/ to 10 mbar

■ Construction

Wafer type EN 558 series 20, Semi-Lug EN 558 series 20, Full-Lug EN 558 series 20, Double flange with face-to-face acc. to EN 558 series 13, 14 and 20, Centric, Eccentric, Triple off-set

■ Temperature

Minus 10 to +540°C

■ Application

Water

Water treatment, Water transport, Water intake from lake or river

Building service

Effluent, Process water, Potable water, HVAC industry

Energy

Desulphurisation, Water treatment, Cooling water

Wastewater

Municipal wastewater, Industrial wastewater, Wastewater treatment plant, Domestic sewage, Shipbuilding

Industry and process technology

Chemical industry, Steelworks, Biomass, Food & beverage, Oil/Gas

Others

Wey sets standards

Real and highclass

- Real. Swiss design with own production facilities.
- Precise. State-of-the-art infrastructure and fully qualified specialists.
- Innovative. Defined customized valve engineering solutions.



Inhouse design

Reliable and competent

- Reliable. Premium Wey product quality for highest service reliability.
- Certified. External audited on international standards.
- Competent. Services, quick with no ifs or buts.



Inhouse quality assurance



Inhouse production



In time processing



Inhouse assembly



Quick customer service

weyvalve.com

**That's
theWey.**

Headquarter

SISTAG AG
Alte Kantonsstrasse 7
6274 Eschenbach, Switzerland
Phone +41 41 449 9944
Fax +41 41 448 3431
info@weyvalve.ch
weyvalve.ch

Subsidiaries

Wey Valve Inc.
P.O. Box 387, 3985 Hwy 6 North
Nettleton, MS 38858, U.S.A.
Phone +1 662 963 2020
Fax +1 662 963 2025
information@weyvalve.com
weyvalve.com

SISTAG GmbH
Bahnhofsplatz 12
76461 Muggensturm, Germany
Phone +49 7222 78 79 79 0
Fax +49 7222 78 79 79 11
info@weyvalve.de
weyvalve.de

**International
representatives**

Address list on request

**That's
theWey.**

WEY®

VALVE INNOVATION_MANAGEMENT



SWISS
PERFORMANCE