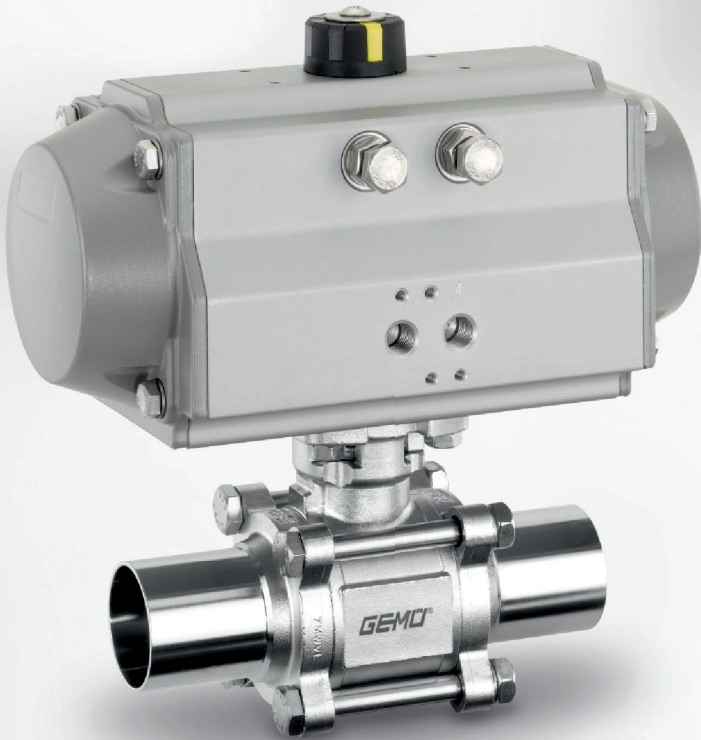


**GEMÜ**



**Ball valves  
in metal and plastic**



#### Wide-ranging application in industrial processes

GEMÜ products are working around the globe in industrial plant and machinery sectors, the automotive industry, water and waste water treatment, power stations, steel works, the paper industry, the petrochemical industry, the basic and fine chemical industries, mining and metal extraction, the sugar industry and in many other industrial areas. No other area subjects valve bodies to such a varied range of stresses as those found in industrial applications. Which is why GEMÜ valve designs are based on the expertise gained during decades of application experience. The specialized production processes and the precise geometric suitability of the material transitions make GEMÜ valve bodies a lasting, highly efficient application solution.

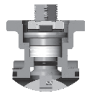
#### Customized solutions for your project business

GEMÜ provides the optimal solution from a single source. As a system supplier of isolation, actuator and control technology, we can respond very flexibly to your individual project-specific needs. Our worldwide sales network provides fast reaction times, customer oriented service and a committed project management team.



# Metal ball valves



	GEMÜ 707	GEMÜ 712	GEMÜ 797	GEMÜ 711
Operator	Manual, lockable hand lever	Manual, lockable hand lever	Manual, lockable hand lever	Manual, lockable hand lever
Nominal size	DN 8 to 50	DN 8 to 100	DN 8 to 100	DN 8 to 100
Body configuration	Straight through (2/2-way)	Straight through (2/2-way)	Straight through (2/2-way)	Straight through (2/2-way), multi-port (3/2-way)
Connection type	Threaded socket DIN ISO 228, NPT ANSI B1.20.1	Threaded socket, spigot, flange. Different standards and designs available	Threaded socket DIN ISO 228, welded socket DIN, spigot DIN EN 12627	Threaded socket, spigot, flange. Different standards and designs available
Valve body material	Body: stainless steel 1.4408, Ball: stainless steel 1.4401	Body: stainless steel 1.4408, Ball: stainless steel 1.4401	Body: stainless steel 1.4408, Ball: stainless steel 1.4401	Body: stainless steel 1.4408, Ball: stainless steel 1.4401
Media temperature *	-20 to 180 °C	-20 to 180 °C	-20 to 180 °C	-20 to 180 °C
Operating pressure *	0 to 63 bar	0 to 63 bar	0 to 137 bar	0 to 63 bar
Seal material	PTFE	PTFE	PTFE	PTFE
Other	2-piece body	3-piece body	3-piece body	3-piece body with top flange EN ISO 5211, additional spindle sealing via O-ring 

\* depending on version and/or operating parameters

## Features:

- Good flow capability
- Suitable for clean, non-particulate media (inert or corrosive and gaseous or liquid), which have no negative impact on the physical and chemical properties of the body and seal material
- Suitable for high operating pressures and temperatures

## Application examples:

- Water supply/treatment
- Electroplating
- Swimming pool processes
- Filter systems
- Operating media supply
- Lubricating and cooling circuits
- Tank construction
- Heating installations, hot water systems, heat exchangers
- General industrial applications

# Metal ball valves



	GEMÜ 751	GEMÜ 791	GEMÜ 728	GEMÜ 798
Operator	Pneumatic	Pneumatic	Electric	Electric
Nominal size	DN 8 to 100	DN 8 to 100	DN 8 to 100	DN 8 to 100
Body configuration	Straight through (2/2-way), multi-port (3/2-way)	Straight through (2/2-way)	Straight through (2/2-way), multi-port (3/2-way)	Straight through (2/2-way)
Connection type	Threaded socket, spigot, flange Different standards and designs available	Threaded socket, spigot, flange Different standards and designs available	Threaded socket, spigot, flange Different standards and designs available	Threaded socket, spigot, flange Different standards and designs available
Control function	Normally closed (NC), Normally open (NO), Double acting (DA)	Normally closed (NC), Normally open (NO), Double acting (DA)	–	–
Voltage	–	–	12, 24 V DC 12, 24, 120, 100-250, 230 V AC 50/60Hz	12, 24 V DC 12, 24, 120, 100-250, 230 V AC 50/60Hz
Valve body material	Body: stainless steel 1.4408, Ball: stainless steel 1.4401	Body: WCB, stainless steel 1.4408, Ball: stainless steel 1.4401	Body: stainless steel 1.4408, Ball: stainless steel 1.4401	Body: WCB, stainless steel 1.4408, Ball: stainless steel 1.4401
Media temperature *	-20 to 180 °C	-20 to 180 °C	-20 to 180 °C	-20 to 180 °C
Operating pressure *	0 to 63 bar	0 to 137 bar	0 to 63 bar	0 to 137 bar
Seal material	PTFE	PTFE	PTFE	PTFE
Other	3-piece body with top flange EN ISO 5211		3-piece body with top flange EN ISO 5211	

\* depending on version and/or operating parameters

- The ball valves comply with the safety requirements of Annex I of the European Pressure Equipment Directive 97/23/EC (PED) for fluids of groups 1 and 2
- Suitable according to TA Luft (German Clean Air Act)
- Types 711 and 751 available in ATEX version II 2G ATEX 94/9/EC
- Suitable for vacuum applications



0035 PED/97/23/  
EC Category III  
Module H



TA Luft



II 2 GD  
ATEX 94/9/EC

## Seal material FDA compliant



	GEMÜ 740 Sanitary	GEMÜ 741 Sanitary	GEMÜ 748 Sanitary
<b>Operator</b>	Manual, lockable hand lever	Pneumatic	Electric
<b>Nominal size</b>	DN 8 to 100	DN 8 to 100	DN 8 to 100
<b>Body configuration</b>	Straight through (2/2-way)	Straight through (2/2-way)	Straight through (2/2-way)
<b>Connection type</b>	Clamp ASME BPE, spigot DIN 11850, series 2, spigot ASME BPE, spigot EN ISO 1127	Clamp ASME BPE, spigot DIN 11850, series 2, spigot ASME BPE, spigot EN ISO 1127	Clamp ASME BPE, spigot DIN 11850, series 2, spigot ASME BPE, spigot EN ISO 1127
<b>Control function</b>	–	Normally closed (NC), Normally open (NO), Double acting (DA)	–
<b>Voltage</b>	–	–	12, 24 V DC 12, 24, 120, 100-250, 230 V AC 50/60Hz
<b>Valve body material</b>	Body: stainless steel CF3M (316L), Ball: stainless steel CF3M (316L)	Body: stainless steel CF3M (316L), Ball: stainless steel CF3M (316L)	Body: stainless steel CF3M (316L), Ball: stainless steel CF3M (316L)
<b>Media temperature *</b>	-20 to 180 °C	-20 to 180 °C	-20 to 180 °C
<b>Operating pressure *</b>	0 to 63 bar	0 to 63 bar	0 to 63 bar
<b>Seal material</b>	TFM™, PTFE	TFM™, PTFE	TFM™, PTFE
<b>Other</b>	3-piece body with top flange	3-piece body with top flange	3-piece body with top flange

\* depending on version and/or operating parameters

- The ball valves comply with the safety requirements of Annex I of the European Pressure Equipment Directive 97/23/EC (PED) for fluids of groups 1 and 2
- Suitable according to TA Luft (German Clean Air Act)
- Optional ATEX version available
- Low surface finish - internal 0.6 µm
- Suitable for vacuum applications
- Dressed welds for a valve body with minimal deadleg and smooth surfaces



0035 PED/97/23/  
EC Category III  
Module H



TA Luft

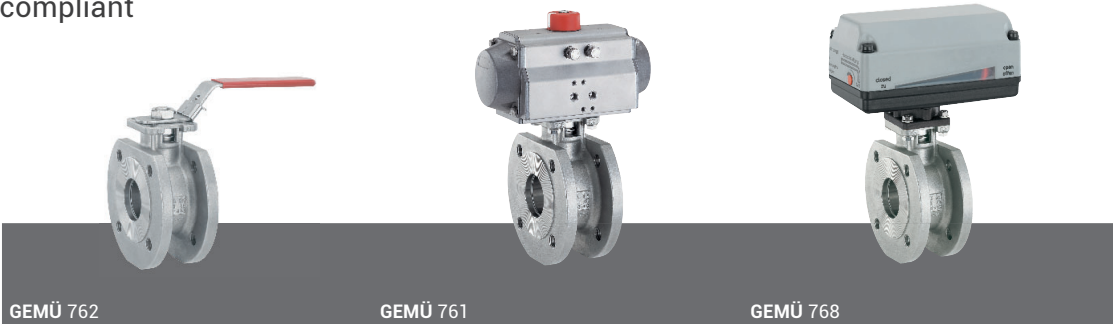


II 2 GD  
ATEX 94/9/EC



# Metal ball valves

Seal material FDA compliant



	GEMÜ 762	GEMÜ 761	GEMÜ 768
Operator	Manual, lockable hand lever	Pneumatic	Electric
Nominal size	DN 15 to 100	DN 15 to 100	DN 15 to 100
Body configuration	Straight through (2/2-way)	Straight through (2/2-way)	Straight through (2/2-way)
Connection type	Flange EN 1092 / PN16 / form B	Flange EN 1092 / PN16 / form B	Flange EN 1092 / PN16 / form B
Control function	–	Normally closed (NC), Double acting (DA)	–
Voltage	–	–	12, 24 V DC 12, 24, 120, 100-250, 230 V AC 50/60Hz
Valve body material	Body: stainless steel 1.4408, Ball: stainless steel 1.4401	Body: stainless steel 1.4408, Ball: stainless steel 1.4401	Body: stainless steel 1.4408, Ball: stainless steel 1.4401
Media temperature *	-20 to 180 °C	-20 to 180 °C	-20 to 180 °C
Operating pressure *	0 to 16 bar	0 to 16 bar	0 to 16 bar
Seal material	PTFE	PTFE	PTFE
Other	One-piece body with top flange	One-piece body with top flange	One-piece body with top flange

\* depending on version and/or operating parameters

**Features:**

- Good flow capability
- Suitable for clean, non-particulate media (inert or corrosive and gaseous or liquid), which have no negative impact on the physical and chemical properties of the body and seal material
- Suitable for high temperature

**Application examples:**

- Water supply/treatment
- Electroplating
- Swimming pool processes
- Filter systems
- Operating media supply
- Lubricating and cooling circuits
- Tank construction
- Heating installations, hot water systems, heat exchangers
- General industrial applications

# Plastic ball valves



	GEMÜ 717	GEMÜ 710	GEMÜ 723
Operator	Manual	Pneumatic	Electric
Nominal size	DN 10 to 100	DN 10 to 100	DN 10 to 100
Body configuration	Straight through (2/2-way), multi-port (3/2-way)	Straight through (2/2-way), multi-port (3/2-way)	Straight through (2/2-way), multi-port (3/2-way)
Connection type	Solvent cement/welded socket DIN and BS, flange DIN and ANSI, union end with insert PE, PP, PVDF in DIN for IR/butt welding, RP threaded socket	Solvent cement/welded socket DIN and BS, flange DIN and ANSI, union end with insert PE, PP, PVDF in DIN for IR/butt welding, RP threaded socket	Solvent cement/welded socket DIN and BS, flange DIN and ANSI, union end with insert PE, PP, PVDF in DIN for IR/butt welding, RP threaded socket
Control function	–	Normally closed (NC), Normally open (NO), Double acting (DA)	–
Voltage	–	–	12, 24 V DC 12, 24, 120, 100-250, 230 V AC 50/60Hz
Valve body material	PVC-U, PVC-C, ABS, PP-H, PVDF	PVC-U, PVC-C, ABS, PP-H, PVDF	PVC-U, PVC-C, ABS, PP-H, PVDF
Media temperature *	-40 to 120 °C	-40 to 120 °C	-40 to 120 °C
Operating pressure *	0 - 16 bar	0 - 10 bar	0 - 10 bar
PN	2/2: 16 (DN 15 to 50), 10 (DN 65 to 100) 3/2: 16 (DN 15 to 50)	2/2: 10 (DN 15 bis 100) 3/2: 10 (DN 15 to 50)	2/2: 10 (DN 15 to 100) 3/2: 10 (DN 15 to 50)
Seal material	FPM, EPDM	FPM, EPDM	FPM, EPDM

\* depending on version and/or operating parameters

## Features:

- Good flow capability
- All media wetted parts and actuator housing are made of plastic
- Suitable for clean, non-particulate media (inert or corrosive and gaseous or liquid), which have no negative impact on the physical and chemical properties of the body and seal material
- Maximum permissible operating temperature 120°C, dependent on operating pressure and body material

## Application examples:

- Water supply/treatment
- Electroplating
- Swimming pool processes
- General industrial applications
- Tank construction

# Positioners and process controllers

Electro-pneumatic positioners and process controllers for pneumatically operated quarter turn valves

For control requirements all pneumatically operated GEMÜ ball valves can be fitted with positioners and process controllers:

- GEMÜ 1435 ePos
- GEMÜ 1436 cPos



Function / Features		GEMÜ 1435 ePos	GEMÜ 1436 cPos
<b>Controller type</b>	Positioner	•	•
	Process controller		•
<b>Operation</b>	Local display / keypad	•	•
	Status display	•	•
	Web browser user		•
	Fieldbus option (Profibus DP, Device Net)		•
<b>Housing</b>	Plastic		•
	Aluminium	•	
<b>Functions</b>	Automatic initialisation (speed-AP)	•	•
	Alarm / error outputs	•	•
	Min/max positions adjustable	•	•
<b>Mounting</b>	Direct mounting to quarter turn actuators	•	•
	Remote mounting to quarter turn actuators	•	•
<b>Control function of valve actuator</b>	Control function 1, normally closed (NC)	•	•
	Control function 2, normally open (NO)	•	•
	Control function 3, double acting (DA)	•	•
<b>Air output</b>		50 NI/min. 90 NI/min.*	150 NI/min. 200 NI/min. 300 NI/min.*

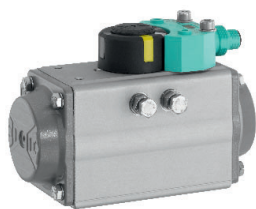
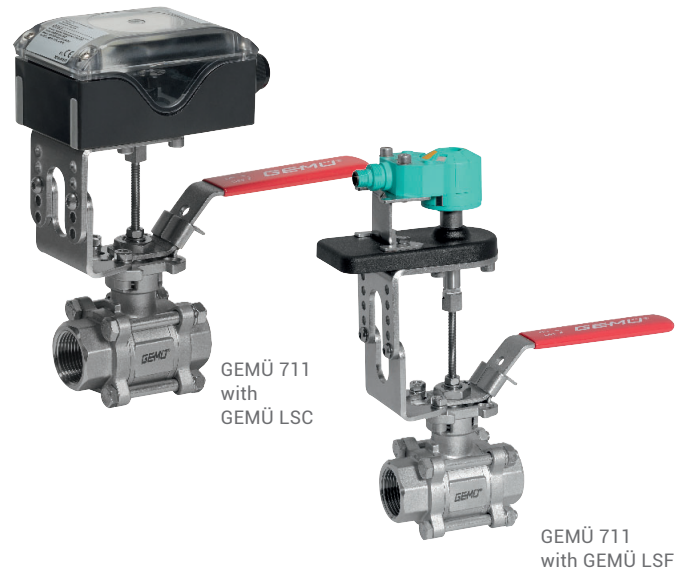
\* only control function 1, Normally closed (NC) and control function 2, Normally open (NO)



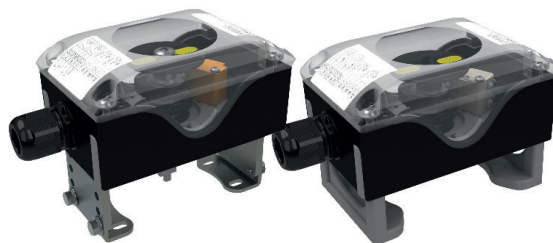
# Electrical position indicators

## Electrical position indicators for manually and pneumatically operated ball valves

Various electrical position indicators are available for ball valves. These devices detect the valve position in any installation position without play and are tension-free. The position indicators can be quickly and easily assembled and are safe and uncomplicated to handle.



GEMÜ LSF  
with DR/SC actuator



GEMÜ LSC



GEMÜ LSC  
with DR/SC actuator

Device type	4221* (end-of-series article)	LSF	LSC	1226	1225
Travel range	0 - 90°	0° / 90°	0 - 90°	0° / 90°	0 - 90°
Connection	M12 x 1 5-pin	M12 x 1 4-pin	M20 x 1.5	PG 13.5	PG 13.5
Programmable	•				
With integrated pilot valve	•				
Ex design		•	•		
IEC version			•		
Fieldbus interface	•		•		
Mechanically adjustable switches			•		•
UL version			•		•
SIL version			•		
Optical position indicator (mechanical)		•	•	•	•
Feedback (OPEN and CLOSED)	•	•	•	•	•

\* Combi switchbox

# Pilot solenoid valves / Control air adapter



## **GEMÜ 0322/0324**

3/2-way solenoid valve, plastic, directly controlled, normally closed (0322 single valve & battery design, 0324 direct mounting)



## **GEMÜ 1470**

NAMUR control air adapter



## **GEMÜ 8357/8458/8500/ 8505/8506**

3/2, 4/2, 5/2-way solenoid valve, metal, servo assisted, normally closed

# Worldwide presence

## AUSTRALIA

GEMÜ Australia Pty. Ltd  
Unit 4 - 8/10 Yandina Road  
West Gosford, NSW 2250  
Phone: +61-2-43 23 44 93  
Fax: +61-2-43 23 44 96  
mail@gemu.com.au

## AUSTRIA

GEMÜ GmbH  
Europaring F15 401  
2345 Brunn am Gebirge  
Phone: +43 2236 30 43 45-0  
Fax: +43 2236 30 43 45-31  
info@gemue.at

## BELGIUM

GEMÜ Valves bvba/sprl  
Koning Albert 1 laan, 64  
1780 Wemmel  
Phone: +32 2 702 09 00  
Fax: +32 2 705 55 03  
info@gemue.be

## BRAZIL / SOUTH AMERICA

GEMÜ Indústria de Produtos  
Plásticos e Metalúrgicos Ltda.  
Rue Marechal Hermes, 1141  
83.065-000 São José dos Pinhais  
Paraná  
Phone: +55-41-33 82 24 25  
Fax: +55-41-33 82 35 31  
gemu@gemue.com.br

## CANADA

GEMÜ Valves Canada Inc.  
2572 Daniel-Johnson Boulevard  
Laval, Quebec  
H7T 2R8  
Phone: +1-450-902-2690  
Fax: +1-404-3 44 4003  
info@gemu.com

## CHINA

GEMÜ Valves (China) Co., Ltd  
No.518, North Hengshahe Road  
Minhang District, 201108  
Shanghai  
Phone: +86-21-2409 9878  
info@gemue.com.cn

## DENMARK

GEMÜ ApS  
Industriparken 16-18  
2750 Ballerup  
Phone: +45 70 222 516  
info@gemue.dk

## FRANCE

GEMÜ S.A.S  
1 Rue Jean Bugatti  
CS 99308 Duppigheim  
67129 Molsheim Cedex  
Phone: +33-3 88 48 21 00  
info@gemu.fr

## INTERCARAT

1 Rue Jean Bugatti  
CS 99308 Duppigheim  
67129 Molsheim Cedex  
Phone: +33-3 88 48 21 20  
sales@intercarat.com

## GERMANY

GEMÜ Gebr. Müller GmbH & Co. KG  
Fritz-Müller-Straße 6 - 8  
74653 Ingelfingen-Criesbach  
Postfach 30  
74665 Ingelfingen-Criesbach

Phone: +49 (0)7940-12 30  
Fax: +49 (0)7940-12 31 92  
(Domestic)  
Fax: +49 (0)7940-12 32 24 (Export)  
info@gemue.de

Inevvo solutions GmbH & Co. KG  
Fritz-Müller-Platz 1  
74676 Niedernhall-Waldzimmern  
Phone: +49 (0)7940-12 38 681  
info@inevvo-solutions.com

## GREAT BRITAIN

GEMÜ Valves Ltd.  
10 Olympic Way  
Birchwood, Warrington  
WA2 0YL  
Phone: +44-19 25-82 40 44  
Fax: +44-19 25-82 80 02  
info@gemu.co.uk

## HONG KONG

GEMÜ (Hong Kong) Co., Ltd.  
Room 2015, Tower B,  
Regent Centre,  
70 TA Chuen Ping Street  
Kwai Chung, N.T., Hong Kong  
P.R. China  
Phone: +852 6873 8280  
Fax: +852 6873 8280  
info@gemue.com.cn

## INDIA

GEMÜ India  
Representative Office  
301, K.B. Complex, Rambaug,  
L.G.Hospital Road, Maninagar,  
Ahmedabad-380 008  
Phone: +91-79-25450438  
+91-79-25450440  
Fax: +91-79-25450439  
sales@gemu.in

## INDONESIA

GEMÜ Valves Pte Ltd  
(Indonesia Representative Office)  
Rukan Mangga Dua Square  
Block F17, 2nd Floor  
Jl. Gunung Sahari Raya No. 1  
Jakarta Utara 14420  
Indonesia  
Phone: +62 (21) - 6231 0035  
Fax +62 (21) - 2907 4643  
info@gemu.co.id

## IRELAND

GEMÜ Ireland Ltd  
15 Eastgate Drive  
Eastgate Business Park  
Little Island  
Co. Cork  
Phone: +353 (0)21 4232023  
Fax: +353 (0)21 4232024  
info@gemu.ie

## ITALY

GEMÜ S.r.l.  
Via Giovanni Gentile, 3  
20157 Milano  
Phone: +39-02-40044080  
Fax: +39-02-40044081  
info@gemue.it

## JAPAN

GEMÜ Japan Co., Ltd.  
2-5-6, Aoi, Higashi-ku,  
Nagoya, Aichi, 461-0004  
Phone: +81-52-936-2311  
Fax: +81-52-936-2312  
info@gemu.jp

## MALAYSIA

GEMÜ VALVES PTE LTD  
(Malaysia Representative Office)  
D-8-09, Block D, No. 2A  
Jalan PJU 1A/7A  
Oasis Square, Oasis Damansara  
47301 Petaling Jaya  
Selangor Darul Ehsan  
Phone: +(603)- 7832 7640  
Fax: +(603)- 7832 7649  
info@gemu.com.sg

## MEXICO

GEMÜ Valvulas S.A. de C.V.  
German Centre,  
Av. Santa Fe No. 170 – OF. 5-1-05  
Col. Lomas de Santa Fe,  
Del. Alvaro Obregon  
01210 Mexico, D.F.  
Phone: +52 55 7090 4161  
+52 55 7090 4179

## RUSSIA

OOO „GEMÜ GmbH“  
Uliza Shipilovskaya, 28A  
115563, Moskau  
Phone: +7(495) 662-58-35  
Fax: +7(495) 662-58-35  
info@gemue.ru

## SINGAPORE

GEMÜ Valves PTE. LTD.  
25 International Business Park  
German Centre #03-73/75  
Singapore 609916  
Phone: +65-65 62 76 40  
Fax: +65-65 62 76 49  
info@gemu.com.sg

## SOUTH AFRICA

GEMÜ Valves Africa Pty. Ltd  
Cnr Olympic Duel Avenue  
And Angus Crescent,  
Northlands Business Park  
(Stand 379),  
New Market Road  
Randburg  
Phone: +27 11 462 7795  
Fax: +27 11 462 4226  
info@gemue.co.za

## SWEDEN

GEMÜ Armatur AB  
Heljesvägen 8  
437 36 Lindome  
Phone: +46-31-996500  
order@gemu.se

## SWITZERLAND

GEMÜ GmbH  
Seetalstr. 210  
6032 Emmen  
Phone: +41-41-7 99 05 05  
Fax: +41-41-7 99 05 85  
info@gemue.ch

GEMÜ Vertriebs AG  
Lettenstrasse 3  
6343 Rotkreuz  
Phone: +41-41-7 99 05 55  
Fax: +41-41-7 99 05 85  
vertriebsag@gemue.ch

## TAIWAN

GEMÜ Taiwan Ltd.  
9F.-5, No.8, Ziqiang S. Rd.  
Zhubei City  
Hsinchu County 302,  
Taiwan (R.O.C.)  
Phone: +886-3-550-7265  
Fax: +886-3-550-7201  
office@gemue.tw

## UNITED STATES

GEMÜ Valves Inc.  
3800 Camp Creek Parkway  
Suite 120, Building 2600  
Atlanta, Georgia 30331  
Phone: +1-678-5 53 34 00  
Fax: +1-404-3 44 93 50  
info@gemu.com

In addition to these  
subsidiaries, GEMÜ has a  
global partner network.

Contact details:

[https://www.gemu-group.com/en\\_GB/kontakte/](https://www.gemu-group.com/en_GB/kontakte/)



 GEMÜ manufacturing site

 GEMÜ subsidiary

