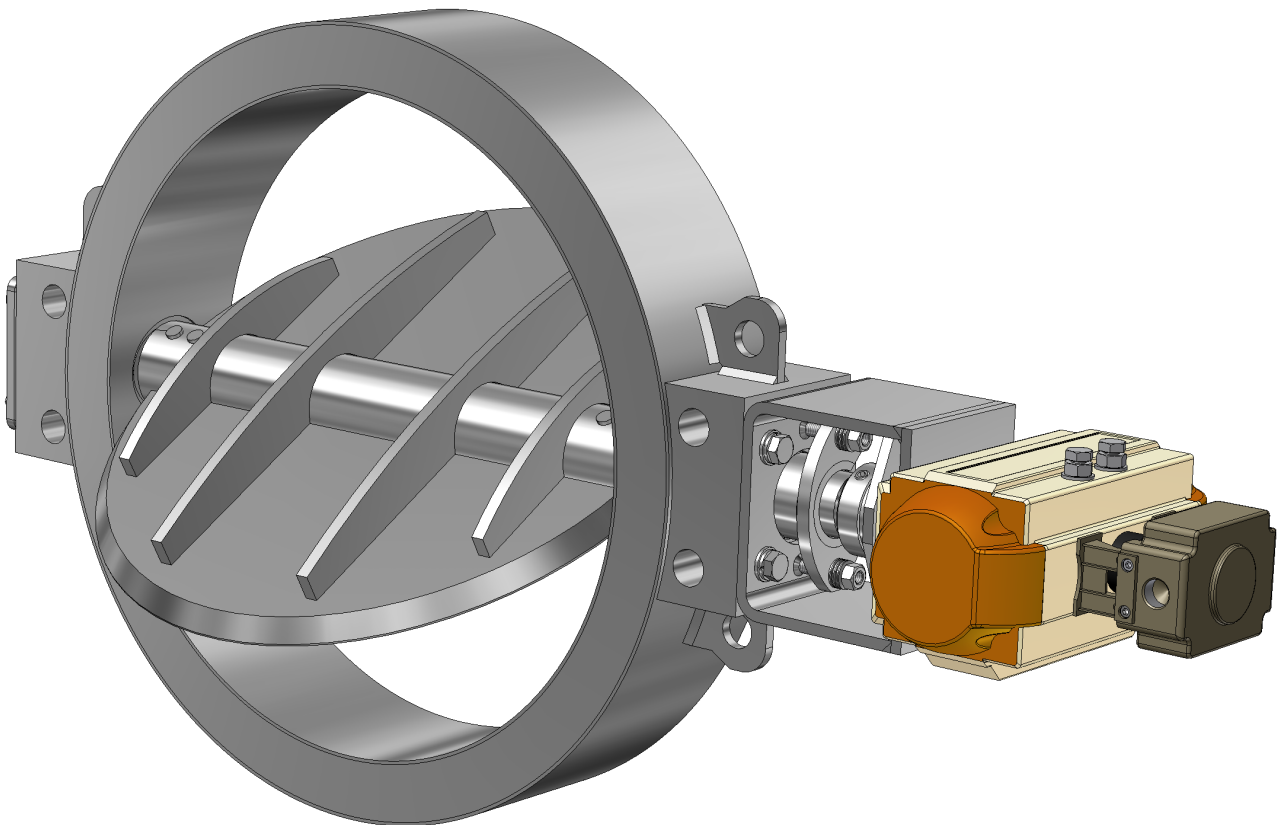


AFT-DVH DN50 - DN1000



Regulating damper valve

Technical description

Damper valves type AFT-DVH serve for the shut-off and/or flow regulation of media such as air and process gas.

Such valves find application in flue gas extraction installations, flue gas desulphurisation, gas utilisation SO₂, SO₃, NO_x, dedusting of furnaces, glass factories, metallurgical plants for copper, zinc, plumb as well as cement factories, etc.

The valves are monolithic construction; bodies can be forged or cutout of steel sheets. Discs can be jointed to the shafts permanently by welding or by dismantable pins (exchangeable discs). For better tightness discs and sealing bars in the body are machined.

Product properties

Diameter range

DN50 – DN1000
(bigger sizes on request)

Mounting of the valve

- Between flanges PN2,5, PN6, PN10, PN16 (acc. to EN1092-1)
- Custom made acc. to customer requirements

Face to face length

- Acc. to AFT standard
- Acc. to EN558-1 (on request)

Design pressure

< 0,5 bar
(higher pressure on request)

Temperature range

-20°C up to +750°C or acc. to customer request
(max. working temperature 1100°C)

Mounting of actuator

Acc. to ISO 5211

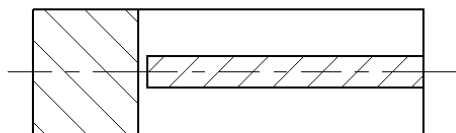
Gland packing

graphite
(other depending on medium and temperature)

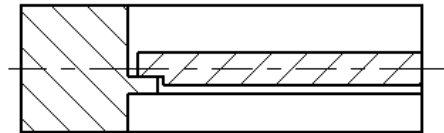
Working positions of damper valve

- horizontal shaft
- vertical shaft
- shaft at required angle

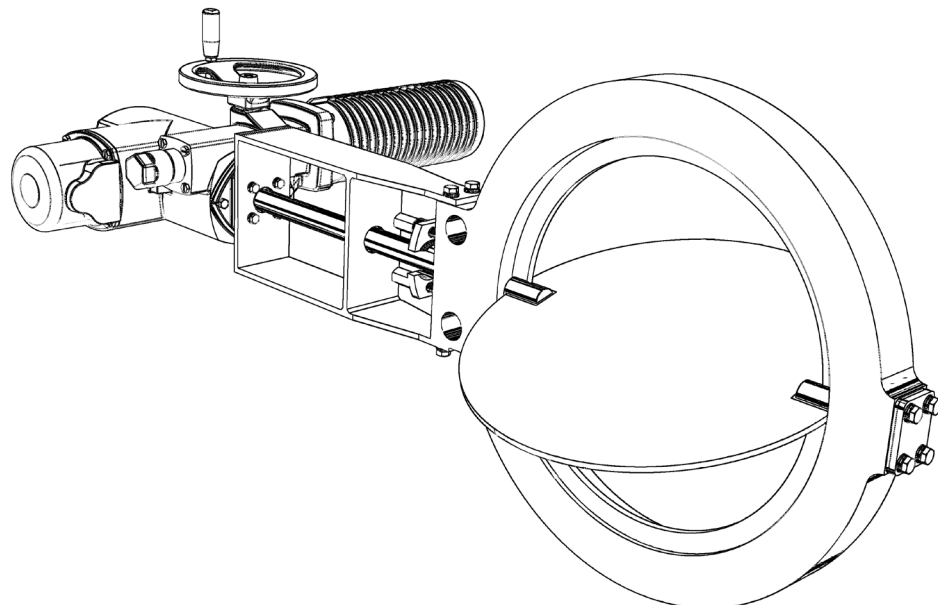
Geometric tightness according to constructional solution applied

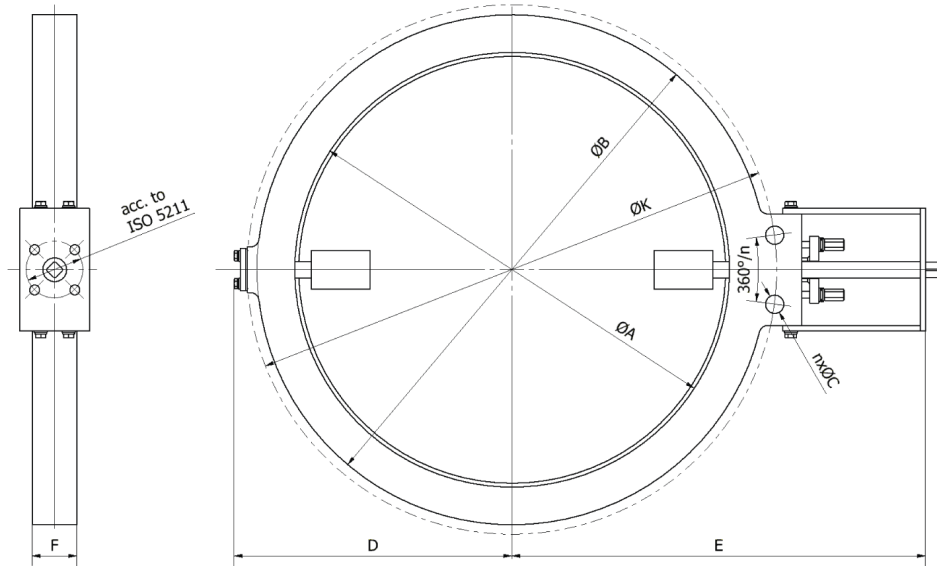


Geometric tightness >98%



Geometric tightness >99%





DN	EN 1092-1 PN 2,5 / PN 6							
	ØA	ØB	ØK	n	ØC	D	E(*)	F
	[mm]	[mm]	[mm]	-	[mm]	[mm]	[mm]	[mm]
50	50	95	110	4	14	80	180	30
65	65	115	130	4	14	90	200	30
80	80	131	150	4	18	105	215	30
100	100	151	170	4	18	115	240	30
125	125	181	200	8	18	130	260	30
150	150	205	225	8	18	145	280	30
200	200	260	280	8	18	170	350	40
250	250	315	335	12	18	195	380	40
300	300	371	395	12	22	220	420	40
350	330	421	445	12	22	250	460	50
400	380	471	495	16	22	290	495	50
450	430	526	550	16	22	330	570	50
500	480	576	600	20	22	350	595	50
600	580	677	705	20	26	400	645	50
700	680	782	810	24	26	450	690	60
800	780	888	920	24	29,5	500	750	60
900	880	988	1020	24	29,5	560	810	60
1000	980	1088	1120	28	29,5	630	950	80

DN	EN 1092-1 PN 10							
	ØA	ØB	ØK	n	ØC	D	E(*)	F
	[mm]	[mm]	[mm]	-	[mm]	[mm]	[mm]	[mm]
50	50	105	125	4	18	80	180	30
65	65	125	145	8	18	90	200	30
80	80	140	160	8	18	105	215	30
100	100	160	180	8	18	115	240	30
125	125	190	210	8	18	130	260	30
150	150	216	240	8	22	145	280	30
200	200	271	295	8	22	170	350	40
250	250	326	350	12	22	195	380	40
300	300	376	400	16	22	220	420	40
350	330	436	460	16	22	255	460	50
400	380	487	515	16	26	290	495	50
450	430	557	585	20	26	330	570	50
500	480	592	620	20	26	350	595	50
600	580	693	725	20	30	400	645	50
700	680	808	840	24	30	450	690	60
800	780	915	950	20	33	500	750	60
900	880	1015	1050	28	33	560	810	60
1000	980	1125	1160	28	33	630	950	80

DN	EN 1092-1 PN 16							
	ØA	ØB	ØK	n	ØC	D	E(*)	F
	[mm]	[mm]	[mm]	-	[mm]	[mm]	[mm]	[mm]
50	50	105	125	4	18	80	180	30
65	65	125	145	8	18	90	200	30
80	80	140	160	8	18	105	215	30
100	100	160	180	8	18	115	240	30
125	125	190	210	8	18	130	260	30
150	150	216	240	8	22	145	280	30
200	200	271	295	12	22	170	350	40
250	250	327	355	12	26	195	380	40
300	300	382	410	12	26	220	420	40
350	330	442	470	16	26	255	460	50
400	380	493	525	16	30	290	495	50
450	430	553	585	20	30	330	570	50
500	480	615	650	20	33	350	595	50
600	580	732	770	20	36	400	645	50
700	680	802	840	24	36	450	690	60
800	780	909	950	24	39	500	740	60
900	880	1009	1050	28	39	560	810	60
1000	980	1126	1170	28	42	630	950	80

Valves type AFT-DVH of other sizes (face-to-face lengths, drilling patterns, nominal diameters, temperatures, pressures) are available on request.

(*) Depending on the temperature of the medium measures can vary - due to applying of thermal isolation of the actuator or dismountable shaft/actuator coupling.

Materials*

	Temperature			
	up to 370°C	from 370°C up to 450°C	from 450°C up to 550°C	from 550°C up to 750°C
Body	S235JR lub S355JR X5CrNi18-10 (1.4301)	P265GH X5CrNi18-10 (1.4301)	16Mo3 X15CrNiSi20-12 (1.4828)	X15CrNiSi20-12 (1.4828) 253 MA (1.4835)
Disc	S235JR lub S355JR X5CrNi18-10 (1.4301)	P265GH X5CrNi18-10 (1.4301)	16Mo3 X15CrNiSi20-12 (1.4828)	X15CrNiSi20-12 (1.4828) 253 MA (1.4835)
Shaft	X20Cr13 (1.4021)	X20Cr13 (1.4021)	X15CrNiSi20-12 (1.4828)	X15CrNiSi20-12 (1.4828)
Sealing	graphite	graphite	graphite	graphite

* - standard executions

Final material execution depends on specific medium, working conditions and customer requirements.

Damper valves actuators and accessories

Manual gear box

Equipment:
electromechanical limit switches or proximity or AS-i

Single or double acting pneumatic actuators (quarter turn, linear)

Equipment:
- solenoid valve
- electromechanical limit switches or proximity
- electropneumatic positioner 4-20 mA
- pneumatic accessories AS-i, PROFIBUS, HART

Emergency functions (options)

In case of no control air the damper valve:
- is closing
- is opening
- stay in the last position

In case of no control signal the damper valve:
- is closing
- is opening
- stay in the last position

Open/close or regulating electric actuators

Equipment:
- stroke and torque limit switches
- position transmitter 4-20mA
- positioner
- local control unit
- equipment for PROFIBUS, HART systems etc.

Special executions

- drive transmission systems – shaft angle
- extensions for non typical applications
- hand lever with position adjustment

AFT Sp. z o.o.

ul. Zielna 1
62-002 Suchy Las · PL
tel. +48 61 820 51 45
fax +48 61 820 69 59

info@aft.pl
www.aft.pl